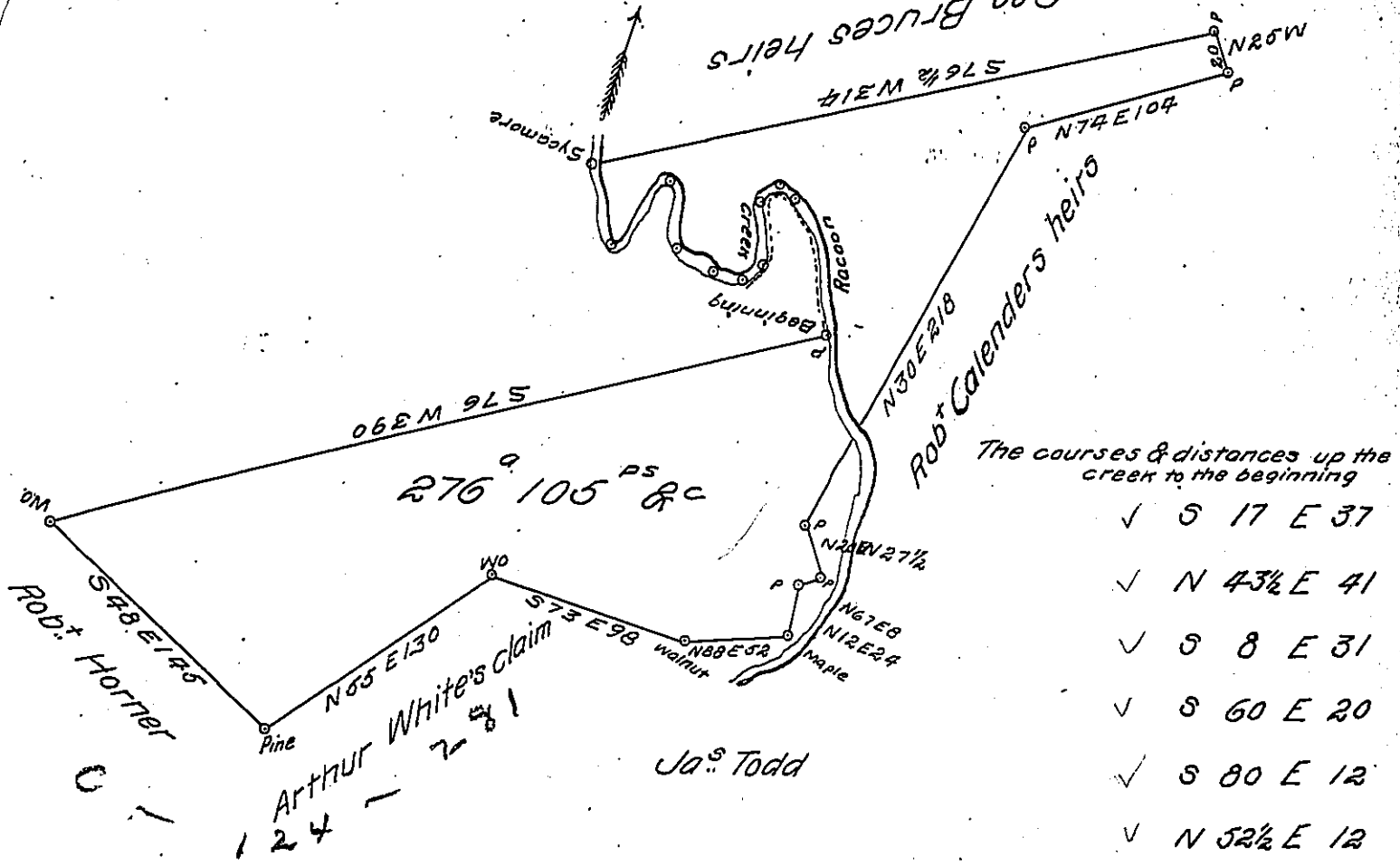


BEAVER

Hopewell ✓

C. 19-51

Geo Brucers heirs



The courses & distances up the creek to the beginning

- ✓ S 17 E 37
- ✓ N 43 1/2 E 41
- ✓ S 8 E 31
- ✓ S 60 E 20
- ✓ S 80 E 12
- ✓ N 52 1/2 E 12
- ✓ North 31
- ✓ N 40 E 18
- ✓ S 54 E 10
- ✓ S 15 E 71

Robt. Horner

Arthur White's Claim
124 - 2 1/4

Ja^s Todd

283

The above is a Draft of a tract of Land Surveyed July 8th 1819 in pursuance of a warrant Granted to Abraham Gum dated Feb^y 11th 1786 Situate formerly in Washington County now Hopewell township Beaver County Containing 276 acres 105 perches & Allowance of 6 P cent &c.

I Hugh McCullough do certify that there was an actual resident Settlement on the ground at time of Survey

To Jacob Spangler Esq^r
Surveyor General

Hugh McCullough D.S.

IN TESTIMONY that the above is a copy of the original remaining on file in the Department of Internal Affairs of Pennsylvania, made conformably to an Act of Assembly approved the 16th day of February, 1833, I have hereunto set my Hand and caused the Seal of said Department to be affixed at Harrisburg, this fifth day of December 1904

James P. Rowan
Secretary of Internal Affairs.